

Digital Project:

Town Maps

Original:

Location:

Electronic Copy courtesy of the Lakes Region Planning Commission
David Jeffers, Technician

Project Status:

Received October 21, 2003
Upload to web October 29, 2003

Staff:

Jennifer Mayo

Volunteer(s):

Processing Technical Information:

Hardware: Dell Inspiron 5100Laptop
Windows XP
Microsoft Office
Adobe Acrobat 6.0

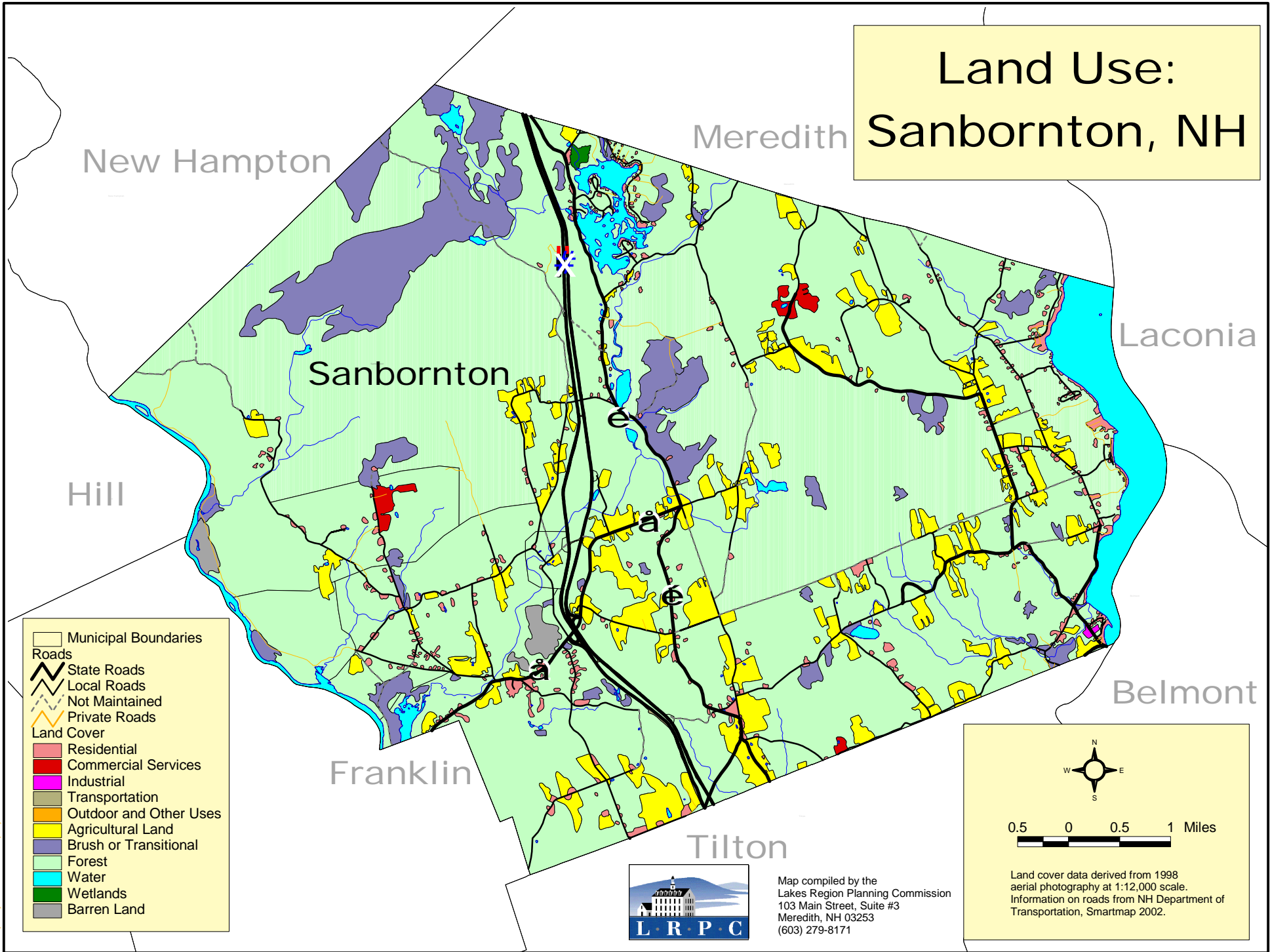
Edition Notes:

PO Box 178 Sanbornton NH 03269
603-279-5499

shdf@sanbornton.org

www.sanbornton.org

Land Use: Sanbornton, NH



Municipal Boundaries

Roads

- State Roads
- Local Roads
- Not Maintained
- Private Roads

Land Cover

- Residential
- Commercial Services
- Industrial
- Transportation
- Outdoor and Other Uses
- Agricultural Land
- Brush or Transitional
- Forest
- Water
- Wetlands
- Barren Land

Land cover data derived from 1998 aerial photography at 1:12,000 scale. Information on roads from NH Department of Transportation, Smartmap 2002.



Map compiled by the
Lakes Region Planning Commission
103 Main Street, Suite #3
Meredith, NH 03253
(603) 279-8171